

TRAINING IN SAFEGUARDING CHILDREN

A guide on how to get the best from training

Mission Statement

The aim of the Stockport LSCB is to promote, prevent and protect the welfare of all children in the borough.

Aim of this document

This document aims to provide guidance on the training and development of staff and volunteers to help them safeguard and promote the welfare of children effectively. This includes being able to recognise when a child may require safeguarding and knowing what to do in response to concerns about the welfare of a child. Practitioners and managers must also be able to work effectively with others both within their agency and across organisational boundaries. This will best be achieved by a combination of single and multi-agency training. (Working Together 2006: 4.1)

Purpose of training

The purpose of training for inter-agency work is to help develop and foster the following in order to achieve better outcomes for children and young people:

- A shared understanding of the tasks, processes, principles, and roles and responsibilities outlined in national guidance and local arrangements for safeguarding children and promoting their welfare;
- More effective and integrated services at both the strategic and individual case level;

- Improved communication between professionals including a common understanding of key terms, definitions and thresholds for action; and
- Effective working relationships, including an ability to work in multi-disciplinary groups or teams; and sound decision making based on information sharing, thorough assessment, critical analysis, and professional judgement. (Working Together, 2006: 4.3)

Target audience

Training and development should be targeted at the following practitioner groups from voluntary, statutory and independent agencies.

GROUP A: Those in **regular contact with children and young people and with adults who are parents/carers**. They are people who are in a position to identify concerns about maltreatment including those that may arise from the Common Assessment Framework (CAF). They need basic training to safeguard and promote the welfare of children.

This group includes workers in sport and leisure, housing, hospitals, residential and day-care settings, child minders, private foster carers, youth workers. This may include workers and volunteers, paid and unpaid.

GROUP B: Those who **work regularly with children and young people and with adults who are parents/carers**. They may be asked to contribute to assessments of children in need. They need a higher level of expertise and a fuller understanding of how to work together to identify and assess concerns and plan undertake and review interventions.

This group includes GPs, hospital and community health staff, children's centre workers, teachers, education welfare, social workers, probation staff, mental health workers, learning disability workers, drugs/ alcohol workers.

GROUP C: Those with a **particular responsibility for safeguarding children**. This group needs a thorough understanding of working together to safeguard children, including complex and/ or serious cases.

This group includes designated health professionals, designated child protection teachers, named health professionals, police, and social workers.

GROUP D: Operational managers at all levels within organisations employing staff to work with children and families or with responsibility for commissioning or delivering services. This group needs specific training on inter-agency and multi-agency working.

This group includes team managers, service managers, designated professionals, professional advisers, practice supervisors.

GROUP E: Those with **strategic and managerial responsibility** for commissioning and delivering services for children and families in each of the agencies listed in Children Act 2004, Section 11.

This group may also include other members of the LSCB and school governors and trustees.

Suggested Learning Outcomes for each of the target groups can be viewed at:

<http://www.everychildmatters.gov.uk/resources-and-practice/IG00061/>

HOW TO BOOK A PLACE ON AN LSCB MULTI-AGENCY COURSE

Anyone who works in **schools** can book courses on-line via the Schools and Communities Workforce Development web-site: <http://scwd.stockport.gov.uk>

Everyone else should complete an [application form](#).

Anyone who works in **health** should liaise with Bridget Dale, who co-ordinates all health applications. Bridget is based at the Redwood Unit: 0161 419 2020.

Completed application forms should be marked '*For the attention of Julie Keary, LSCB Training Administrator*' and either emailed to staff.dev@stockport.gov.uk or faxed to 0161 480 3497.

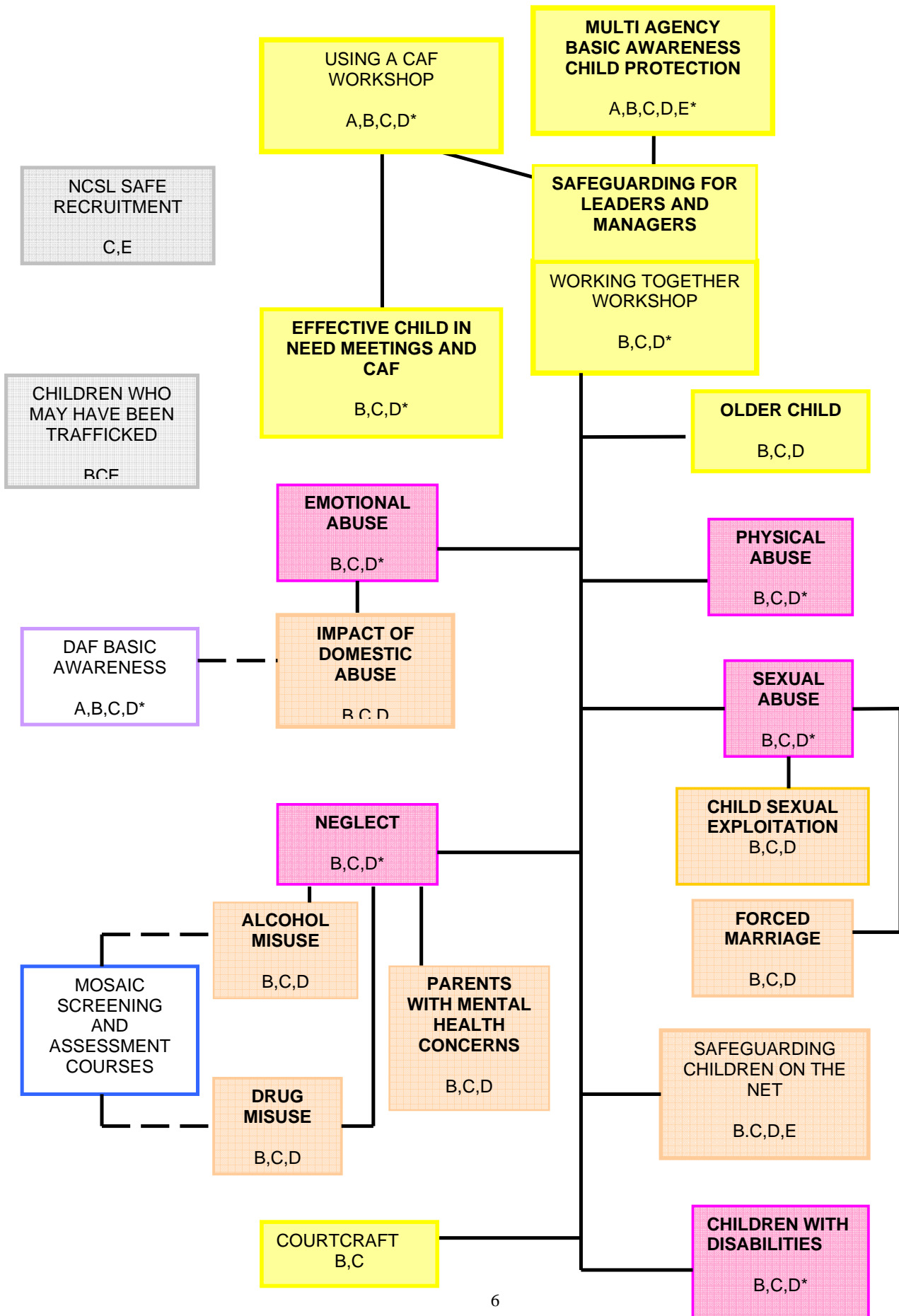
Please pencil the date of the course in your diary when you make your application.

The **closing date** for applications is **one month before the course date** as shown in the course programme. Places are not allocated on a first-come, first-served basis. Course that are over-subscribed are short-listed to ensure a multi-agency balance. **Confirmation** of place and course details will be sent out by email to participants and their managers where possible. Your manager will be advised if the application is unsuccessful. If you do not receive any information about the course please contact the Training Administrator. If you are unable to attend please let the training administrator know as soon as possible so that your place can be re-allocated.

Please note that the training administrator works part-time and is available Tuesday – Thursday mornings only until 12.30pm and on Fridays until 3.30pm. Thank you. Julie is based at First House. The phone number is 218 1491.

QUICK INDEX TO COURSES

| | |
|--|----|
| MULTI-AGENCY BASIC AWARENESS LEVEL 1 | 7 |
| CHILD PROTECTION FOR FOSTER CARERS | 8 |
| DAF DOMESTIC ABUSE | 8 |
| BASIC AWARENESS | 8 |
| NSPCC TRAINING | 8 |
| SAFEGUARDING FOR LEADERS AND MANAGERS | 9 |
| NCSL SAFE RECRUITMENT | 9 |
| INTEGRATED WORKING: USING THE COMMON ASSESSMENT FRAMEWORK (CAF) | 10 |
| INTEGRATED WORKING: EFFECTIVE CHILD-IN-NEED MEETINGS AND THE COMMON ASSESSMENT FRAMEWORK | 10 |
| COURTCRAFT | 11 |
| WORKING TOGETER WORKSHOP | 12 |
| SAFEGUARDING CHILDREN FROM PHYSICAL ABUSE | 13 |
| SAFEGUARDING CHILDREN FROM SEXUAL ABUSE | 14 |
| SAFEGUARDING CHILDREN FROM EMOTIONAL ABUSE | 15 |
| SAFEGUARDING CHILDREN FROM NEGLECT | 16 |
| SAFEGUARDING CHILDREN WITH DISABILITIES | 17 |
| SAFEGUARDING CHILDREN PARENTAL ALCOHOL MISUSE | 18 |
| SAFEGUARDING CHILDREN WHERE THERE IS DRUG MISUSE | 19 |
| IMPACT OF DOMESTIC ABUSE ON CHILDREN | 20 |
| PRACTICE ISSUES WHEN SAFEGUARDING THE OLDER CHILD | 21 |
| SAFEGUARDING CHILDREN FROM SEXUAL EXPLOITATION | 22 |
| FORCED MARRIAGE- BASIC AWARENESS | 23 |
| SAFEGUARDING CHILDREN ON THE NET | 24 |
| SAFEGUARDING CHILDREN WHERE PARENTS HAVE MENTAL HEALTH CONCERNS | 25 |
| SAFEGUARDING CHILDREN WHO MAY HAVE BEEN TRAFFICKED | 25 |



Using this matrix

This matrix is to help you decide your training needs as part of your agency responsibility to safeguard children. The matrix shows each of the courses available, the target audience and the learning outcomes to help you decide if the course is appropriate to your learning needs. It can be used alongside any other training / professional development tools used by your agency. It aims to provide a record of your identified training needs in this area.

| Course title | Target audience | Learning outcomes | Pre-learning required | Contact | Proposed dates |
|--------------------------------------|---|--|-----------------------|--|---|
| Multi-agency Basic Awareness Level 1 | <p>Anyone who works with children and young people or with adults who are parents and carers.</p> <p>This course is open to private and voluntary organisations as well as statutory sector workers</p> | <p>Recognise and respond to concerns about a child in need</p> <p>Contribute and take whatever actions are needed to safeguard children</p> <p>Communicate and act appropriately within national and local guidance</p> <p>Appreciate own role and that of others</p> <p>Become familiar with local arrangements, services and sources of advice</p> | None | <p>Any queries should be directed to Helen Harrison Multi-agency training co-ordinator 07891 949087</p> <p>Schools should book places via the SCWD website.</p> <p>Health should book via the Redwood Unit</p> <p>Otherwise places should be booked via the LSCB website in the usual way.</p> | <p>17/10/2008</p> <p>24/02/2009</p> <p>23/04/2009</p> <p>07/07/2009</p> |

| Course title | Target audience | Learning outcomes | Pre-learning required | Contact | Proposed dates |
|------------------------------------|--|---|---|--|--|
| Child Protection for Foster Carers | Approved foster carers Group A | Improved knowledge of safeguarding children | Basic Knowledge included in pre-approval training | Lynn Steele Staff Development 07800 618833 | Ask contact for details |
| DAF Domestic Abuse Basic Awareness | Social care staff in both CYPD and A&C Teachers Education welfare Connexions YOT Police Probation Housing Health workers Adults Social Care especially MH and LD and older people Groups A,B,C,D | Identify the signs and symptoms of domestic abuse Be familiar with the definition of domestic abuse Develop a knowledge of the legal framework Be clear about the referral and contact points Understand the requirements of information sharing Be aware of the availability of local and national services | None | Bilkis Hirani Staff Development 07800618832 Courses advertised in the Staff Development Short Course Booklet | |
| NSPCC training | Education staff Sports staff Scouts and guides Groups A,E | This is training provided to an individual. There is a cost for this training not supported by the LSCB. | None | For discussion about suitability please contact Helen Harrison 07891 949087. www.nspcc.org.uk/educare | Anytime This is a distance learning course. |

| Course title | Target audience | Learning outcomes | Pre-learning required | Contact | Proposed dates |
|---------------------------------------|---|--|---|--|---|
| Safeguarding for leaders and managers | Designated persons, Managers/ senior staff with organisational responsibility for safeguarding in the Child Care workforce Group E | What to do if they have concerns What will happen Further contribution to the safeguarding process Basic legal framework Role of the designated person | Safeguarding and the Common Assessment Framework (mandatory) | The courses are advertised in the SureStart Workforce Development booklet To book contact Norah Wheeler Training administrator 0161 218 1201 Further information available from Glenda Brocklehurst or Miranda Galloway | |
| NCSL Safe recruitment | Head Teacher and governor responsible for recruitment of staff and sit on personnel sub-group of school governing body Groups C,E | Good practice in recruitment Procedures and strategies to help those involved in the recruitment process in schools to deter, identify and reject applicants who are unsuitable to work with children. Strengthening safeguards for children in schools in general by helping deter and prevent abuse. | Essential | This is on-line training. www.ncsl.org.uk Contact Helen Harrison if you have any queries. 07891 949087 | Anytime This is a distance learning course |

| Course title | Target audience | Course description | Pre-learning required | Contact | Proposed dates |
|--|--|--|--|---|--|
| Integrated Working: using the Common Assessment Framework (CAF) | Anyone who works with children and young people who may be expected to access other services Groups A,B,C,D | <i>This is a revised half-day course that provides an introduction to the use of the Common Assessment Form (CAF). It can also be used as a refresher for workers who wish to update their skills and knowledge.</i> | None | Any queries should be directed to Helen Harrison Multi-agency training co-ordinator 07891 949087 Schools should book places via the SCWD website. Health should book via the Redwood Unit | 29/09/2008 14/11/2008 03/02/2009 21/05/2009 |
| Integrated Working: Effective Child-in-Need meetings and the Common Assessment Framework | Anyone who works with children and young people who may be expected to chair a child in need meeting E.g. Groups B,C,D | <i>This is a revised one day workshop that looks at the Child in Need processes and paperwork. It also looks at the key role of the lead practitioner Workers who completed the initial course could attend this to refresh their skills and knowledge</i> | Integrated working: Using a CAF (essential) | Otherwise places should be booked via the LSCB website in the usual way. CAF queries should be made to: Nicola Warr Common Processes Team 0161 474 5654 | 20/11/2008 10/03/2009 16/06/2009 |

| Course title | Target audience | Course description | Pre-learning required | Contact | Proposed dates |
|--------------|---|--|-----------------------|--|--|
| Courtcraft | <p>Anyone who works with children and young people who may be expected to go to court and give evidence in care proceedings</p> <p>Groups B,C</p> | <p><i>This is a one day workshop for workers who may be required to give evidence at court as part of child care proceedings. Participants have the opportunity to practice at court during the day.</i></p> | | <p>Any queries should be directed to Helen Harrison Multi-agency training co-ordinator 07891 949087</p> <p>Schools should book places via the SCWD website.</p> <p>Health should book via the Redwood Unit</p> <p>Otherwise places should be booked via the LSCB website in the usual way.</p> | <p>29/09/2008 27/04/2009</p> |

| Course title | Target audience | Course description | Pre-learning required | Contact | Proposed dates |
|---|--|---|--|--|---|
| Working Together Workshop (previously Safeguarding children workshop (level 2)) | <p>Anyone who works with children and young people and who may expect to be involved in the CP process and to attend CP meetings Anyone who works with adults who are parents/ carers and who may expect to be involved in the CP process and attend CP meetings</p> <p>Groups B,C,D</p> | <p><i>This is a revised and updated one day workshop that looks at the child protection process as described in the Working Together to Safeguard children guidance (2006), including information sharing. It provides an opportunity to explore the issues and requirements of child protection meetings for workers who are likely to be involved in them.</i></p> <p><i>Participants should have completed a Basic Awareness course and CAF training before attending this course.</i></p> <p><i>This course is recommended as prior learning for people who are likely to attend child protection conferences before attending the topic workshops.</i></p> | <p>Basic awareness Level 1 (Essential)</p> <p>Introduction to CAF workshop (Essential)</p> | <p>Any queries should be directed to Helen Harrison Multi-agency training co-ordinator 07891 949087</p> <p>Schools should book places via the SCWD website.</p> <p>Health should book via the Redwood Unit</p> <p>Otherwise places should be booked via the LSCB website in the usual way.</p> | <p>22/09/2008</p> <p>14/01/2009</p> <p>31/03/2009</p> <p>01/07/2009</p> |

| Course title | Target audience | Course description | Pre-learning required | Contact | Proposed dates |
|---|--|--|--|--|--|
| Safeguarding children from physical abuse | <p>Anyone who works with children and young people and who needs to safeguard children from physical abuse</p> <p>Groups B,C,D</p> | <p><i>This is a half day workshop that explores the topic of physical abuse and fabricated illness building on the introduction provided by the Basic Awareness course.</i></p> <p><i>Participants should have completed CAF training before attending this course.</i></p> <p><i>Participants who are likely to attend child protection conferences should have completed the Working Together workshop (previously the Safeguarding Children Level 2 workshop)</i></p> | <p>Working Together workshop</p> <p>Safeguarding for leaders and managers (for child care workers)</p> <p>Using a CAF workshop (preferred)</p> | <p>Any queries should be directed to Helen Harrison Multi-agency training co-ordinator 07891 949087</p> <p>Schools should book places via the SCWD website.</p> <p>Health should book via the Redwood Unit</p> <p>Otherwise places should be booked via the LSCB website in the usual way.</p> | <p>21/10/2008 24/03/2009</p> |

| Course title | Target audience | Course description | Pre-learning required | Contact | Proposed dates |
|---|--|--|--|--|----------------------------------|
| Safeguarding children from sexual abuse | <p>Anyone who works with children and young people and who needs to safeguard children from sexual abuse</p> <p>Groups B,C,D</p> | <p><i>This is a one day workshop that explores the topic of sexual abuse building on the introduction provided by the Basic Awareness course. The course looks at the process of investigation and the links between civil and court proceedings. It also explores how sexual predators operate and the role of the non-abusing parent. Participants should have completed CAF training before attending this course. Participants who are likely to attend child protection conferences should have completed the Working Together workshop (previously the Safeguarding Children Level 2 workshop)</i></p> | <p>Working Together workshop</p> <p>Safeguarding for leaders and managers (for child care workers)</p> <p>Using a CAF workshop (preferred)</p> | <p>Any queries should be directed to Helen Harrison Multi-agency training co-ordinator 07891 949087</p> <p>Schools should book places via the SCWD website.</p> <p>Health should book via the Redwood Unit</p> <p>Otherwise places should be booked via the LSCB website in the usual way.</p> | <p>06/10/2008 03/03/2009</p> |

| Course title | Target audience | Learning outcomes | Pre-learning required | Contact | Proposed dates |
|--|--|--|--|--|----------------------------------|
| Safeguarding children from emotional abuse | <p>Anyone who works with children and young people and who needs to safeguard children from emotional abuse, including families where domestic abuse is a concern.</p> <p>Groups B,C,D</p> | <p><i>This is a one day workshop that explores the topic of emotional abuse, including the enhanced definition that includes bullying and the effects of domestic abuse. It also explores resilience and how it can help when planning interventions with families. It builds on the introduction from the Basic Awareness. Participants should have completed CAF training before attending this course. Participants who are likely to attend child protection conferences should have completed the Working Together workshop (previously the Safeguarding Children Level 2 workshop)</i></p> | <p>Working Together workshop</p> <p>Safeguarding for leaders and managers (for child care workers)</p> <p>Using a CAF workshop (preferred)</p> | <p>Any queries should be directed to Helen Harrison Multi-agency training co-ordinator 07891 949087</p> <p>Schools should book places via the SCWD website.</p> <p>Health should book via the Redwood Unit</p> <p>Otherwise places should be booked via the LSCB website in the usual way.</p> | <p>03/11/2008 09/03/2009</p> |

| Course title | Target audience | Learning outcomes | Pre-learning required | Contact | Proposed dates |
|------------------------------------|---|---|--|--|----------------------------------|
| Safeguarding children from neglect | <p>Anyone who works with children and young people and who needs to safeguard children from neglect</p> <p>Anyone who needs to complete a Graded Care Profile</p> <p>Groups B,C,D</p> | <p><i>This is a one day workshop that explores the topic of Neglect and introduces the assessment tool – the Graded Care Profile – as part of the neglect protocol for Stockport.</i></p> <p><i>It builds on the introduction from the Basic Awareness. Participants should have completed CAF training before attending this course.</i></p> <p><i>Participants who are likely to attend child protection conferences should have completed the Working Together workshop (previously the Safeguarding Children Level 2 workshop)</i></p> <p><i>This workshop links to the Safeguarding children in families where there is drug use/ alcohol use courses.</i></p> | <p>Working Together workshop</p> <p>Safeguarding for leaders and managers (for child care workers)</p> <p>Using a CAF workshop (preferred)</p> | <p>Any queries should be directed to Helen Harrison Multi-agency training co-ordinator 07891 949087</p> <p>Schools should book places via the SCWD website.</p> <p>Health should book via the Redwood Unit</p> <p>Otherwise places should be booked via the LSCB website in the usual way.</p> | <p>30/09/2008 12/05/2009</p> |

| Course title | Target audience | Learning outcomes | Pre-learning required | Contact | Proposed dates |
|---|--|--|--|--|----------------------------------|
| Safeguarding children with disabilities | <p>Anyone who might work with children and young people who are disabled and therefore vulnerable to abuse</p> <p>Groups B,C,D</p> | <p><i>This is a one-day workshop. It looks at the social and medical models of disability and the additional vulnerability of disabled children.</i></p> <p><i>It provides an opportunity to explore issues and improve outcomes for children within common processes. Participants should have attended CAF training prior to this course</i></p> | <p>Working Together workshop</p> <p>Safeguarding for leaders and managers (for child care workers)</p> <p>Using a CAF workshop (preferred)</p> | <p>Any queries should be directed to Helen Harrison Multi-agency training co-ordinator 07891 949087</p> <p>Schools should book places via the SCWD website.</p> <p>Health should book via the Redwood Unit</p> <p>Otherwise places should be booked via the LSCB website in the usual way.</p> | <p>10/11/2008 26/03/2009</p> |

| Course title | Target audience | Course description | Pre-learning required | Contact | Proposed dates |
|---|---|--|--|--|-------------------------------------|
| Safeguarding children Parental Alcohol Misuse | <p>Anyone who may work with parents/ carers who misuse alcohol or young people who misuse alcohol and therefore vulnerable to abuse</p> <p>Groups B,C,D</p> | <p><i>This is a one day workshop that looks at the issues around alcohol use and provides an opportunity to explore support services that are available within Stockport. This course links to the Safeguarding children: neglect course.</i></p> <p><i>It is also supported by the MOSAIC course 'Understanding the effects of adult substance misuse on the children around them'.</i></p> | <p>Working Together workshop</p> <p>Safeguarding for leaders and managers (for child care workers)</p> <p>Using a CAF workshop (preferred)</p> | <p>Any queries should be directed to Helen Harrison Multi-agency training co-ordinator 07891 949087</p> <p>Schools should book places via the SCWD website.</p> <p>Health should book via the Redwood Unit</p> <p>Otherwise places should be booked via the LSCB website in the usual way.</p> | <p>18/11/2008</p> <p>09/06/2008</p> |

| Course title | Target audience | Learning outcomes | Pre-learning required | Contact | Proposed dates |
|--|---|---|--|--|----------------------------------|
| Safeguarding children where there is Drug misuse | <p>Anyone who may work with parents/ carers who misuse drugs or young people who misuse drugs and who are therefore vulnerable to abuse</p> <p>Groups B,C,D</p> | <p><i>This is a one day workshop that explores issues around drug use and provides an opportunity to explore support services that are available in Stockport. Before attending this course, participants should complete either a Basic Drugs Awareness course (via the DAT) or the 'How to recognise drug use in young people' course (via MOSAIC). This course also links to the Safeguarding children: Neglect course and is also supported by the MOSAIC course 'Understanding the effects of adult substance misuse on the children around them'.</i></p> | <p>Working Together workshop</p> <p>Safeguarding for leaders and managers (for child care workers)</p> <p>Using a CAF workshop (preferred)</p> | <p>Any queries should be directed to Helen Harrison Multi-agency training co-ordinator 07891 949087</p> <p>Schools should book places via the SCWD website.</p> <p>Health should book via the Redwood Unit</p> <p>Otherwise places should be booked via the LSCB website in the usual way.</p> | <p>24/11/2008 23/06/2009</p> |

| Course title | Target audience | Course description | Pre-learning required | Contact | Proposed dates |
|--------------------------------------|--|---|---|--|----------------------------------|
| Impact of domestic abuse on children | <p>Anyone who may work with families who are experiencing domestic abuse or who have experience domestic abuse</p> <p>Groups B,C,D</p> | <p><i>This updated one day workshop explores the effect of domestic abuse on families. It links to the new joint DAF/ LSCB Domestic Abuse protocol.</i></p> <p><i>Participants should have completed the DAF Basic Awareness half day workshop before attending this course.</i></p> <p><i>This course links to the Safeguarding children: emotional abuse course and the Forced Marriage: basic awareness course</i></p> | <p>Working Together workshop</p> <p>Safeguarding for leaders and managers (for child care workers)</p> <p>Using a CAF workshop (preferred)</p> <p>DAF Basic A Awareness (Essential)</p> | <p>Any queries should be directed to Helen Harrison Multi-agency training co-ordinator 07891 949087</p> <p>Schools should book places via the SCWD website.</p> <p>Health should book via the Redwood Unit</p> <p>Otherwise places should be booked via the LSCB website in the usual way.</p> | <p>27/01/2009 12/05/2009</p> |

| Course title | Target audience | Course description | Pre-learning required | Contact | Proposed dates |
|---|--|--|--|--|---|
| Practice Issues when safeguarding the older child | <p>Anyone who works with young people of high school age and above</p> <p>Trainer: Sara Swann, MBE</p> <p>Groups B,C,D</p> | <p><i>This is a one day workshop delivered by Sara Swann, MBE. It provides an opportunity for those who work with older children to explore some of the constraints and legal options that are available to this group.</i></p> <p><i>It links with the Child Sexual Exploitation and the Forced Marriage: Basic Awareness courses.</i></p> <p><u>Learning outcomes</u> To understand the importance of older children's participation How to involve young people in any decisions effecting their own safety Why this is a necessity for their future safety How workers own moral code and personal experiences impact on practice.</p> | <p>Working Together workshop</p> <p>Safeguarding for leaders and managers (for child care workers)</p> <p>Using a CAF workshop (preferred)</p> | <p>Any queries should be directed to Helen Harrison Multi-agency training co-ordinator 07891 949087</p> <p>Schools should book places via the SCWD website.</p> <p>Health should book via the Redwood Unit</p> <p>Otherwise places should be booked via the LSCB website in the usual way.</p> <p>NB Number of places available on this course is restricted by the trainer.</p> | <p>04/12/2008 04/03/2009 18/06/2009</p> |

| Course title | Target audience | Course description | Pre-learning required | Contact | Proposed dates |
|--|--|---|---|--|----------------------------------|
| Safeguarding children from sexual exploitation | <p>Anyone who works with children and young people who may be at risk of sexual exploitation</p> <p>Trainer: Sara Swann, MBE</p> <p>Groups B,C,D</p> | <p><i>This one day workshop introduces the 'boyfriend' model and explores practical and legal solutions when working with the older age group.</i></p> <p><i>The course links closely to the Safeguarding Children: Sexual Abuse and the Safeguarding children on the Net courses .</i></p> | <p>Working Together workshop</p> <p>Safeguarding children from sexual abuse</p> <p>CAF training preferred</p> | <p>Any queries should be directed to Helen Harrison Multi-agency training co-ordinator 07891 949087</p> <p>Schools should book places via the SCWD website.</p> <p>Health should book via the Redwood Unit</p> <p>Otherwise places should be booked via the LSCB website in the usual way.</p> | <p>21/01/2009 10/06/2009</p> |

| Course title | Target audience | Course description | Pre-learning required | Contact | Proposed dates |
|----------------------------------|--|---|---|--|----------------------------------|
| Forced marriage- Basic awareness | <p>Anyone who works with young people where forced marriage may be an issue:</p> <p>Social care Health Education Police Youth service YOT</p> <p>Operational managers should attend this session</p> <p>Groups B,C,D</p> | <p><i>This is a half-day workshop that aims to raise awareness of forced marriage. It explores some of the legal background and the good practice guidance published by the Foreign and Commonwealth Office. This course links closely to the DAF Basic Awareness course and the Impact of Domestic Abuse course.</i></p> | <p>Working Together workshop level 2</p> <p>Safeguarding for leaders and managers (for child care workers)</p> <p>DAF Basic Awareness</p> | <p>Any queries should be directed to Helen Harrison Multi-agency training co-ordinator 07891 949087</p> <p>Schools should book places via the SCWD website.</p> <p>Health should book via the Redwood Unit</p> <p>Otherwise places should be booked via the LSCB website in the usual way.</p> | <p>20/01/2009 19/05/2008</p> |

| Course title | Target audience | Learning outcomes | Pre-learning required | Contact | Proposed dates |
|----------------------------------|--|---|---|--|----------------------------------|
| Safeguarding children on the Net | <p>Anyone who works with children and young people and have access to IT:</p> <p>Social care Health Youth Service Schools – SMT Schools - ICT Schools advisers Voluntary Sector YOT</p> <p>Groups B,C,D,E</p> | <p><i>Ensuring that children and adults are responsible digital users within this rapidly developing area is a key part of safeguarding. This one-day workshop explores the risks to children posed by ICT – computers, mobile phones and also looks at cyberbullying. The course signposts participants to further training that is available.</i></p> <p><i>This course links to the Safeguarding children: Sexual abuse course and the Child Sexual Exploitation courses. Also links to allegations management and abusive images protocols.</i></p> | <p>Sex Abuse course, Child Sexual Exploitation and Safeguarding the Older child courses are recommended</p> | <p>Any queries should be directed to Helen Harrison Multi-agency training co-ordinator 07891 949087</p> <p>Schools should book places via the SCWD website.</p> <p>Health should book via the Redwood Unit</p> <p>Otherwise places should be booked via the LSCB website in the usual way.</p> | <p>22/01/2009 05/05/2009</p> |

| Course title | Target audience | Course description | Pre-learning required | Contact | Proposed dates |
|---|---|---|--|--|----------------|
| Safeguarding children where parents have mental health concerns | <p>Anyone who works with children or young people where their parents/ carers have a mental health concern.</p> <p>Anyone who works with adults with mental health concerns who are also parents/ carers.</p> <p>Groups B,C,D</p> | <p><i>This is a new course to our programme.</i></p> <p><i>One day provides an introduction to basic child protection for adult and mental health workers; one day provides an introduction to basic mental health awareness for children's workers. The final day provides an opportunity for both adult's and children's workers to explore the issues around working with families and ways to improve service delivery.</i></p> | Participants <u>must</u> attend the relevant introductory course and the final day | <p>Any queries should be directed to Helen Harrison Multi-agency training co-ordinator 07891 949087</p> <p>Schools should book places via the SCWD website.</p> <p>Health should book via the Redwood Unit</p> <p>Otherwise places should be booked via the LSCB website in the usual way.</p> | 28/04/2009 |
| Safeguarding children who may have been trafficked | <p>Anyone who works with children or young people who may have been trafficked or be at risk of being trafficked. This includes trafficking internal to the UK as well as external to the UK.</p> <p>Groups B,C,D,E</p> | <p><i>This is an on-line training programme offered by ECPAT who have expertise in this area.</i></p> <p><i>It is available via the ECPAT web-site.</i></p> <p><i>There are 3 modules.</i></p> <p><i>There is no charge</i></p> | None | <p>This is on-line training.</p> <p>www.ecpat.org.uk</p> <p>any queries please speak to Helen Harrison, Multi-agency training co-ordinator 07891 949087</p> | Anytime |

| Course title | Target audience | Learning outcomes | Pre-learning required | Contact | Proposed dates |
|---|---|---|--|--|--------------------------------|
| <p style="color: red; text-align: center;">NWIAT: Training for Trainers</p> | <p>Staff from any agency who wish to join the CP Training Pool</p> <p>Anyone who completes this training will be included on the Training Rota.</p> | <p>This is a regional course</p> <p>Demonstrate the skills to facilitate child protection training</p> <p>Increase their skills in co-training</p> <p>Incorporate multi-agency perspectives in their training</p> <p>Reflect on their skills as trainers in a multi-agency setting and make adjustments to their delivery technique to meet the learning styles of their audience</p> | <p>Experience of working with Child Protection cases</p> | <p>Helen Harrison Multi-agency training co-ordinator 07891 949087</p> <p>Courses advertised to the Safeguarding Multi-agency Training Pool</p> | <p>Ask contact for details</p> |

AGENCY LINK PERSONS (for Training Enquiries)

| AGENCY | NAME | EMAIL | TELEPHONE |
|--|----------------------|--|-------------------------------|
| CAFCASS | Glen Hagan | glen.hagan@cafcass.gov.uk | 0161 480 5450 07917 277533 |
| Common Processes Team | Nicola Warr | nicola.warr@stockport.gov.uk | 0161 474 5654 |
| Child Care Workforce SureStart | Norah Wheeler | norah.wheeler@stockport.gov.uk | 0161 218 1201 |
| | | Additional information from the Workforce Development managers: Glenda Brocklehurst Miranda Galloway | 07891 949412 07891 949450 |
| Services for Young People (Connexions, Youth Service, EWS) | Julia Storey | julia.storey@stockport.gov.uk | 0161 480 6438 |
| PCT & Hospital Training Administrator | Bridget Dale | Bridget.dale@stockport-pct.nhs.uk | 0161 419 2020 |
| | | Additional information available from Julie Parker (PCT) or Clare Woodford (SHH) | |

| | | | |
|-----------------------------|-----------------------|---|-------------------------------|
| LSCB Training Administrator | Julie Keary | Julie.keary@stockport.gov.uk Julie works part-time and is available Tuesday to Thursday mornings and until 3pm on Fridays. | 0161 218 1491 |
| LSCB Training Co-ordinator | Helen Harrison | helen.harrison@stockport.gov.uk | 07891 949087 |
| Police | Phil Escott | philip.escott@gmp.police.uk | 0161 856 9802 |
| Probation | Jean Ross | jean.ross@manchester.probation.gsi.gov.uk | |
| CVS | Nadia Ali | nadia@stockportcvs.org.uk | 0161 477 0246 |
| SAVY | Robin Tryon | robin@stockportsavy.org.uk Information may also be available from Louise Harrison, PVI Workforce Development | 07891 949927 0161 406 6931 |
| SCES (Continuing Education) | Lynn Perry | Lynn.perry@stockport.gov.uk This is for SureStart Safeguarding courses as advertised in the SureStart booklet. | 07891 949927 |
| Social Care | Mary O'Neill | mary.oneill@stockport.gov.uk | 07800 618835 |