

safeguarding



children

in Stockport

**STOCKPORT (SHADOW) LSCB  
ANNUAL REPORT 2005-6**



## **INTRODUCTION**

In April 2005, the Stockport Area Child Protection Committee (ACPC) was replaced by a shadow Local Safeguarding Children Board (LSCB). This annual report therefore outlines the development of that shadow Board during the year 2005-6 which led to the establishment of the statutory LSCB on 1<sup>st</sup> April 2006, as required by the Children Act 2004. The report also outlines information about the core business completed or overseen by the shadow LSCB in order to promote the safeguarding of children in Stockport.

During 2005 Stockport experienced its first Joint Area Review (JAR) and the criteria established by the safeguarding element of that inspection were valuable in informing the development of the LSCB objectives. The JAR report stated that in October 2005 an effective shadow LSCB was operational and well established, refocusing services to minimise incidence of abuse and neglect. This was considered to be a notable achievement.

Working Together to Safeguard Children 2006 indicates that reporting via an annual report is no longer required. Future reporting of the work of the LSCB will therefore be undertaken by a review of the business plan in May each year, and the business plan for the year will also be available for accountability purposes.















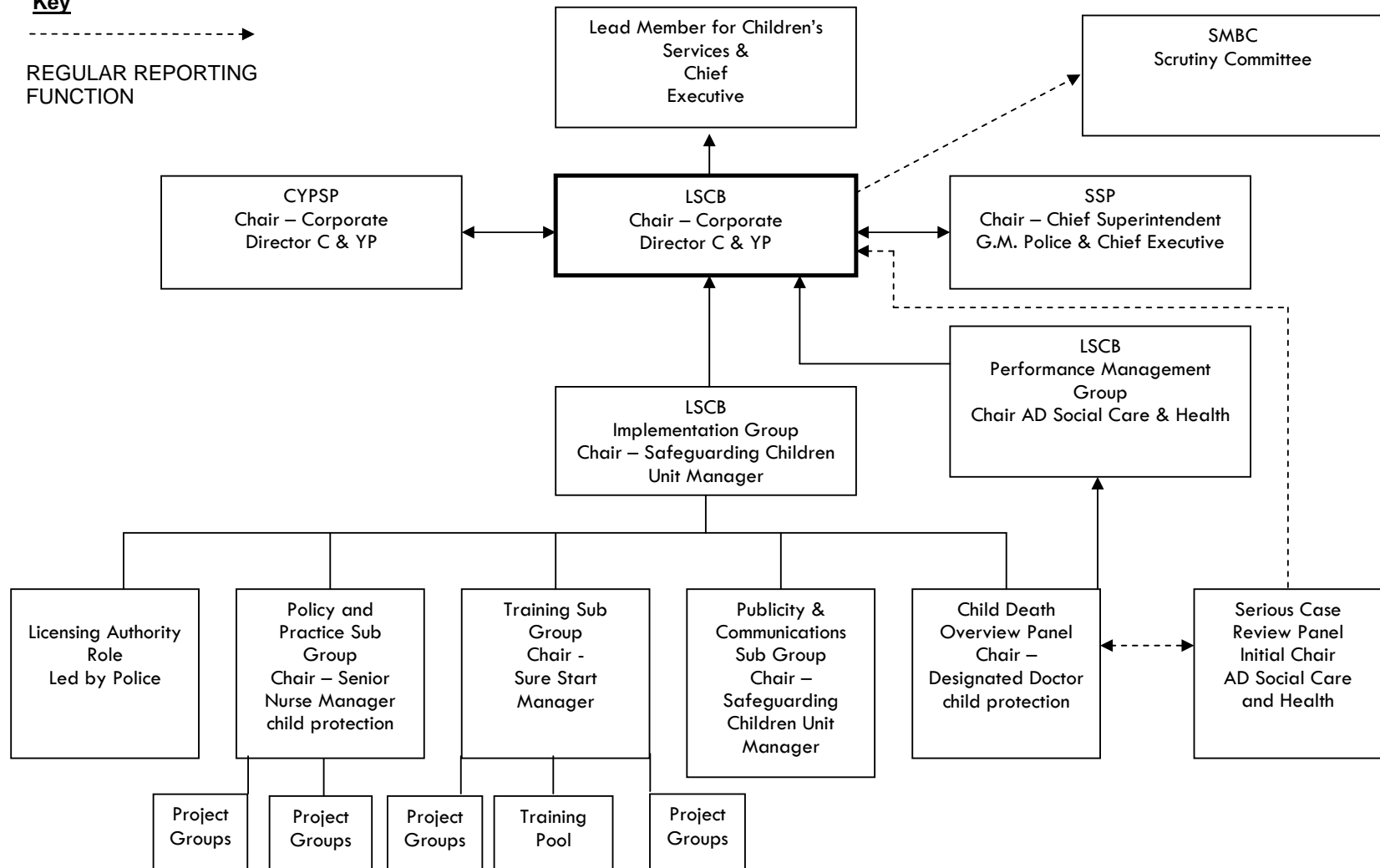


The Child Death Overview Panel has not yet met, and does not become a statutory requirement until April 2008. It is a further expansion of the LSCB remit to consider all unexpected child deaths and near misses not just those who are the subject of a Serious Case Review. An initial review of all unexpected Child Deaths in Stockport over the last three years was undertaken to provide baseline information for the new panel, and information was provided for the LSCB. The implications of this information require further analysis, and further work will be undertaken during 2006-7 to establish a process by which the information gathering and analysis will be undertaken by the panel on a regular basis.

## APPENDIX 1 LSCB STRUCTURE CHART

**Key**

----->  
REGULAR REPORTING  
FUNCTION



## APPENDIX 2 LSCB MEMBER LIST

LSCB MEMBER NAME	SERVICE DESIGNATION & POST
<b>Children &amp; Young Peoples Directorate</b>	
Andrew Webb	Corporate Director, Children & Young People (CHAIR)
Michael Jameson	Assistant Director – Health & Social Care
Dominic Tumelty	Service Manager, Early Intervention & Family Support
Charlotte Ramsden	Service Manager – Safeguarding Children Unit
Dave Taylor	Sure Start Manager
Joyce McClusky	Primary Head Teacher (The Dale)
Peter Whitehead	Secondary Schools (Avondale High School)
Jacqui Belfield-Smith	Manager, YOT
Penny Pugh	Principal Education Welfare Officer
<b>GMP</b>	
CSI Neil Wain	GMP – Stockport
<b>Health</b>	
Lita Reason	Senior Nurse Manager (Child Protection)
Gillian Frame	Clinical Director - PCT
Alison Ramsay	Midwife Manager, NHS Trust
Sue Kardahji	PCT Health promotion manager
Dil Jauffur	Pennine Care (Adult Mental Health), Service Manager Drug & Alcohol
Dr Louise Theodosiou	Pennine Care (Mental Health), Consultant Psychiatrist
Dr Ian Mecrow	PCT/ NHS TRUST – Consultant Paediatrician
Jane Rossini	NHS TRUST Consultant in Public Health
Dr Abdul Ghafoor	Named GP, PCT
<b>Other Agencies</b>	
Marion Meakin	Manager, Probation
Mike Halsall	Litigation Manager, Legal Services
Una Hagan	Children’s Services, NSPCC
Glen Hagan	Manager, CAFCASS
Medie De Vos	Director, CVS
Don Hale	Sports Development Officer (YP) Leisure Services

*Appendix 2 continued below.....*







